

### ■ Features

- DIP 1"x1" package with industry standard pinout
- 8:1(9~75Vdc) ultra-wide input range
- Operating temperature range -40 ~ +90°C
- No minimum load required
- Comply to BS EN/EN55032 radiated Class A without additional components
- High efficiency up to 88%
- Protections: Short circuit (Continuous) / Overload / Over voltage / UVLO
- 1.5KVdc I/O isolation
- Remote ON/OFF control
- Trimming output ( $\pm 10\%$ )
- 3 years warranty

### ■ Applications

- Telecom/datacom system
- Wireless network
- Industrial control facility
- Instrument
- Analyzer
- Detector
- Data switch

### ■ GTIN CODE

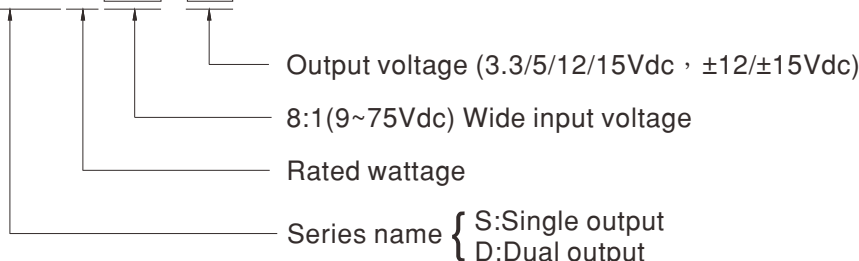
MW Search: <https://www.meanwell.com/serviceGTIN.aspx>

### ■ Description

SKMW20W8 and DKMW20W8 series are 20W isolated and regulated module type DC-DC converter with DIP 1"x1" package. It features international standard pins, a high efficiency up to 88%, wide working temperature range -40~+90°C, 1.5KVdc I/P-O/P isolation voltage, compliance to BS EN/EN55032 radiated Class A without additional components, continuous-mode short circuit, overload, over voltage, input under voltage protection, remote ON/OFF and trimmable output voltage etc. The models account for 9~75Vdc 8:1 ultra-wide input range, and various output voltage, 3.3V/5V/12V/15V for single output and  $\pm 12V/\pm 15V$  for dual outputs, which are suitable for all kinds of systems, such as industrial control, telecommunication field, distributed power architecture, and so on.

### ■ Model Encoding

**S**KMW20W8-12



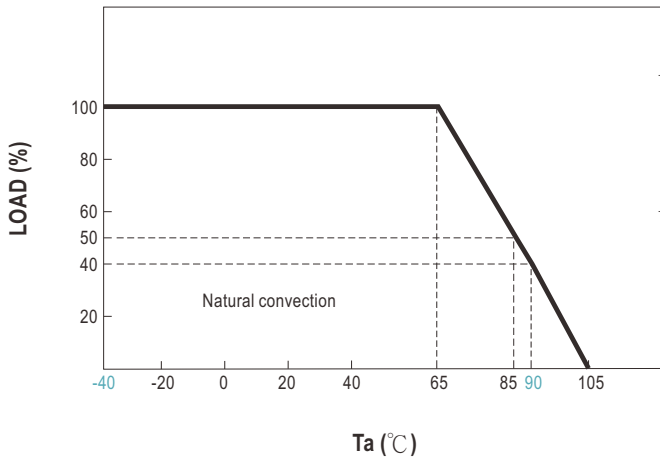


MODEL SELECTION TABLE							
ORDER NO.	INPUT			OUTPUT		EFFICIENCY (TYP.)	CAPACITOR LOAD (MAX.)
	INPUT VOLTAGE (RANGE)	INPUT CURRENT		OUTPUT VOLTAGE	OUTPUT CURRENT		
		NO LOAD	FULL LOAD				
SKMW20W8-03	Nominal 12V, 24V, 36V, 48V, 72V (9 ~ 75V)	10mA	364mA	3.3V	0~4500mA	86%	4500μF
SKMW20W8-05		10mA	487mA	5V	0~4000mA	87%	4000μF
SKMW20W8-12		10mA	485mA	12V	0~1670mA	87%	1650μF
SKMW20W8-15		10mA	480mA	15V	0~1330mA	87%	1300μF
DKMW20W8-12		10mA	485mA	±12V	±0~830mA	87%	*800μF
DKMW20W8-15		10mA	480mA	±15V	±0~660mA	88%	*650μF

\* For each output

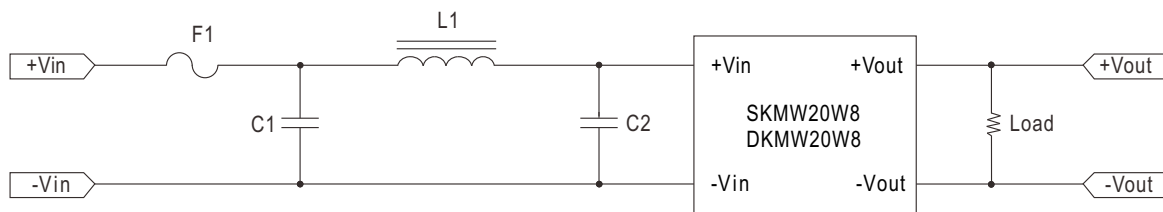
SPECIFICATION			
<b>INPUT</b>			
VOLTAGE RANGE	9~75Vdc		
SURGE VOLTAGE (100ms max.)	100Vdc		
FILTER	Pi network		
PROTECTION	Fuse recommended. 5A delay time Type		
<b>OUTPUT</b>			
VOLTAGE ACCURACY	±1.5%		
RATED POWER	20W		
RIPPLE & NOISE	Note.2	150mVp-p	
LINE REGULATION	Note.3	±0.2%	
LOAD REGULATION	Note.4	±0.5%	
CROSS REGULATION	±5% @ 25% ~ 100% load only dual output		
SWITCHING FREQUENCY (Typ.)	3.3/5Vout models: 270KHz, other models: 330KHz		
EXTERNAL TRIM ADJ. RANGE (Typ.)	±10% (Single output model only)		
<b>PROTECTION</b>			
SHORT CIRCUIT	Continuous, automatic recovery		
OVERLOAD	110 ~ 200% rated output power		
	Protection type : Recovers automatically after fault condition is removed		
OVER VOLTAGE	Clamp by zener diode		
UNDER VOLTAGE LOCKOUT (Typ.)	Start-up voltage: 8.3Vdc		
	Shutdown voltage: 8Vdc		
<b>FUNCTION</b>			
REMOTE CONTROL	Power ON: R.C. ~ -Vin >3.5~75Vdc or open circuit ; Power OFF: R.C. ~ -Vin <1Vdc or short		
<b>ENVIRONMENT</b>			
COOLING	Free-air convection		
WORKING TEMP.	-40 ~ +90°C (Refer to "Derating Curve")		
CASE TEMPERATURE	+110°C max.		
WORKING HUMIDITY	20% ~ 90% RH non-condensing		
STORAGE TEMP., HUMIDITY	-55 ~ +125°C, 10 ~ 95% RH non-condensing		
TEMP. COEFFICIENT	±0.03% / °C (0 ~ 65°C)		
SOLDERING TEMPERATURE	1.5mm from case of 1 ~ 5 sec./260°C max.		
VIBRATION	10 ~ 500Hz, 2G 10min./1cycle, period for 60min. each along X, Y, Z axes		
<b>SAFETY &amp; EMC (Note.5)</b>			
SAFETY STANDARDS	EAC TP TC 020/2011 approved		
WITHSTAND VOLTAGE	I/P-O/P:1.5KVdc		
ISOLATION RESISTANCE	I/P-O/P:1000M Ohms / 500Vdc / 25°C / 70% RH		
ISOLATION CAPACITANCE (Typ.)	1500pF		
EMC EMISSION	Parameter	Standard	Test Level / Note
	Conducted	BS EN/EN55032(CISPR32)	Class A with additional components
	Radiated	BS EN/EN55032(CISPR32)	Class A without additional components
EMC IMMUNITY	Parameter	Standard	Test Level / Note
	ESD	BS EN/EN61000-4-2	Level 3, ±8KV air, Level 2, ±4KV contact
	Radiated Susceptibility	BS EN/EN61000-4-3	Level 2, 3V/m
	EFT/Bursts	BS EN/EN61000-4-4	Level 1, 0.5KV
	Surge	BS EN/EN61000-4-5	Level 2, Line-Line 0.5KV
	Conducted	BS EN/EN61000-4-6	Level 2, 3V
<b>OTHERS</b>			
MTBF	>1542Khrs MIL-HDBK-217F(25°C)		
DIMENSION (L*W*H)	25.4*25.4*10.2mm (1*1*0.4 inch)		
CASE MATERIAL	Black coated copper with non-conductive base		
PACKING	20g ; 12pcs/per tube, 600pcs/50 tube/per carton		
<b>NOTE</b>			
1.All parameters are specified at normal input (48Vdc), rated load, 25°C 70% RH ambient. 2.Ripple & noise are measured at 20MHz by using a 12" twisted pair terminated with a 0.1µf & 47µf capacitor. 3.Line regulation is measured from low line to high line at rated load. 4.Load regulation is measured from 0% to 100% rated load. 5.The final equipment must be re-confirm that it still meet EMC directives. For guidance on how to perform these EMC tests, please refer to "EMI testing of component power supplies."(as available on <a href="http://www.meanwell.com">http://www.meanwell.com</a> ) ※ Product Liability Disclaimer : For detailed information, please refer to <a href="https://www.meanwell.com/serviceDisclaimer.aspx">https://www.meanwell.com/serviceDisclaimer.aspx</a>			

■ Derating Curve



■ EMC Suggest Circuit

※ Required external componets to meet BS EN/EN55032 conducted Class A emission as below:



Model No.	BS EN/EN55032 conducted Class A			
	F1	C1	C2	L1
SKMW20W8 DKMW20W8	Suggest 5A delay time Type	2.2μF/100V	10μF/100V	10μH/7A

### External Output Trimming

In order to trim the voltage up or down one needs to connect the trim resistor either between the trim pin and -Vo for trim-up and between trim pin and +Vo for trim-down. The output voltage trim range is ±10%. This is shown in Figures 1 and 2:

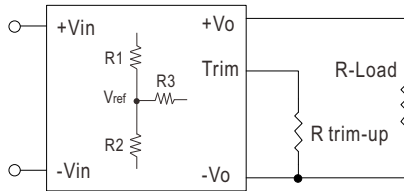


Figure 1. Trim-up Voltage Setup

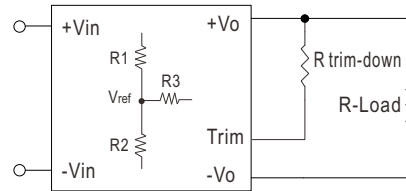


Figure 2. Trim-down Voltage Setup

#### 1. The value of Rtrim-up defined as:

$$R_{trim-up} = \left( \frac{V_r \times R1 \times (R2 + R3)}{(V_o - V_{o, nom}) \times R2} \right) - R_t \text{ (K}\Omega\text{)}$$

Where

R<sub>trim-up</sub> is the external resistor in Kohm.

V<sub>o, nom</sub> is the nominal output voltage.

V<sub>o</sub> is the desired output voltage.

R1, R<sub>t</sub>, R2, R3 and V<sub>r</sub> are internal to the unit and are defined in Table 1.

Table 1 – Trim up and Trim down Resistor Values

Model Number	Output Voltage(V)	R1 (KΩ)	R2 (KΩ)	R3 (KΩ)	R <sub>t</sub> (KΩ)	V <sub>ref</sub>
SKMW20W8-03	3.3	2.74	1.8	0.249	9.1	1.24
SKMW20W8-05	5	2.32	2.32	0	8.2	2.5
SKMW20W8-12	12	6.8	2.4	2.32	22	2.5
SKMW20W8-15	15	8.06	2.4	3.9	27	2.5

For example, to trim-up the output voltage of 5.0V module (SKMW20W8-05) by 10% to 5.5V, R trim-up is calculated as follows:

$$V_o - V_{o, nom} = 5.5 - 5.0 = 0.5V$$

$$R1 = 2.32 \text{ K}\Omega$$

$$R2 = 2.32 \text{ K}\Omega$$

$$R3 = 0 \text{ K}\Omega$$

$$R_t = 8.2 \text{ K}\Omega$$

$$V_r = 2.5V$$

$$R_{trim-up} = \left( \frac{2.5 \times 2.32 \times (2.32+0)}{0.5 \times 2.32} \right) - 8.2 = 3.4(\text{K}\Omega)$$

#### 2. The value of Rtrim-down defined as:

$$R_{trim-down} = R1 \times \left( \frac{V_r \times R1}{(V_{o, nom} - V_o) \times R2} - 1 \right) - R_t \text{ (K}\Omega\text{)}$$

Where

R<sub>trim-down</sub> is the external resistor in Kohm.

V<sub>o, nom</sub> is the nominal output voltage.

V<sub>o</sub> is the desired output voltage.

R1, R<sub>t</sub>, R2, R3 and V<sub>r</sub> are internal to the unit and are defined in Table 1.

For example, to trim-down the output voltage of 5.0V module (SKMW20W8-05) by 10% to 4.5V, R trim-down is calculated as follows:

$$V_{o, nom} - V_o = 5.0 - 4.5 = 0.5V$$

$$R1 = 2.32 \text{ K}\Omega$$

$$R2 = 2.32 \text{ K}\Omega$$

$$R3 = 0 \text{ K}\Omega$$

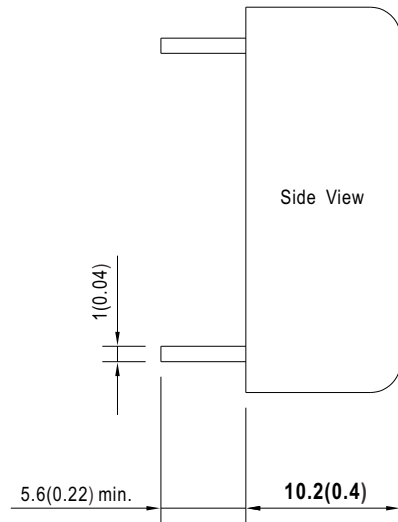
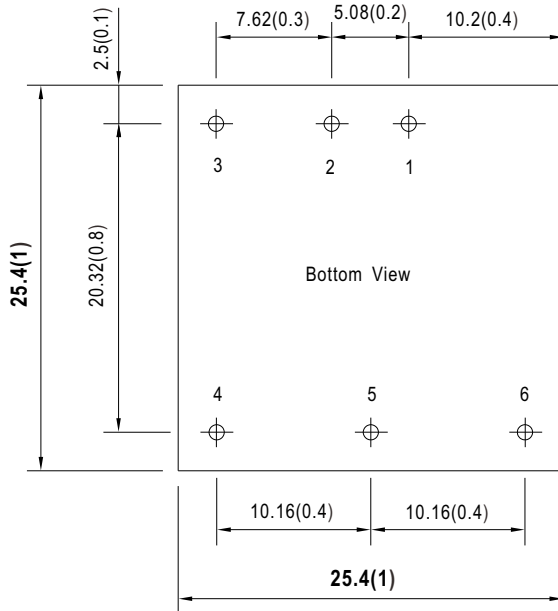
$$R_t = 8.2 \text{ K}\Omega$$

$$V_r = 2.5V$$

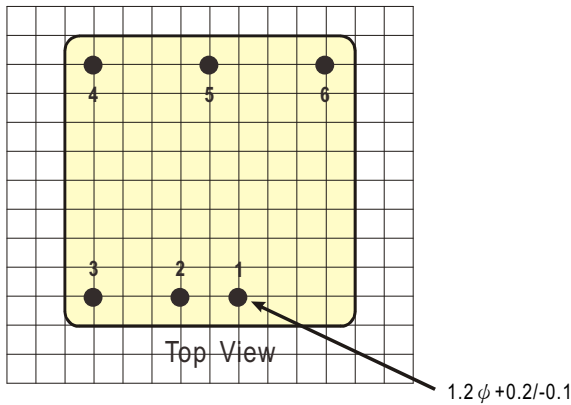
$$R_{trim-down} = 2.32 \times \left( \frac{2.5 \times 2.32}{0.5 \times 2.32} - 1 \right) - 8.2 = 1.08 \text{ (K}\Omega\text{)}$$

**Mechanical Specification**

- All dimensions in mm (inch)
- Tolerance:  $x.x \pm 1\text{mm} (x.x \pm 0.04")$ ,  $x.xx \pm 0.25\text{mm} (x.xx \pm 0.01")$
- Pin size is  $1 \pm 0.1\text{mm} (0.04" \pm 0.004")$



Per Grid: 2.54mm



**Pin Assignment**

Pin No.	Pin-Out	
	SKMW20W8 (Single output)	DKMW20W8 (Dual output)
1	+Vin	+Vin
2	-Vin	-Vin
3	R.C.	R.C.
4	-Vout	-Vout
5	Trim	Common
6	+Vout	+Vout

**Packing**

Standard Tube Packing	MPQ Per Tube (PCS)	One Tube G.W.	Max. Q'TY/ Carton(PCS)	One Carton G.W.
<p>Unit : mm</p> <p>Tube pattern</p> <p>CARTON L390.9 x W284.8 x H175.7</p>	12	276g	600	14.1Kg

**Installation Manual**

Please refer to : <http://www.meanwell.com/manual.html>